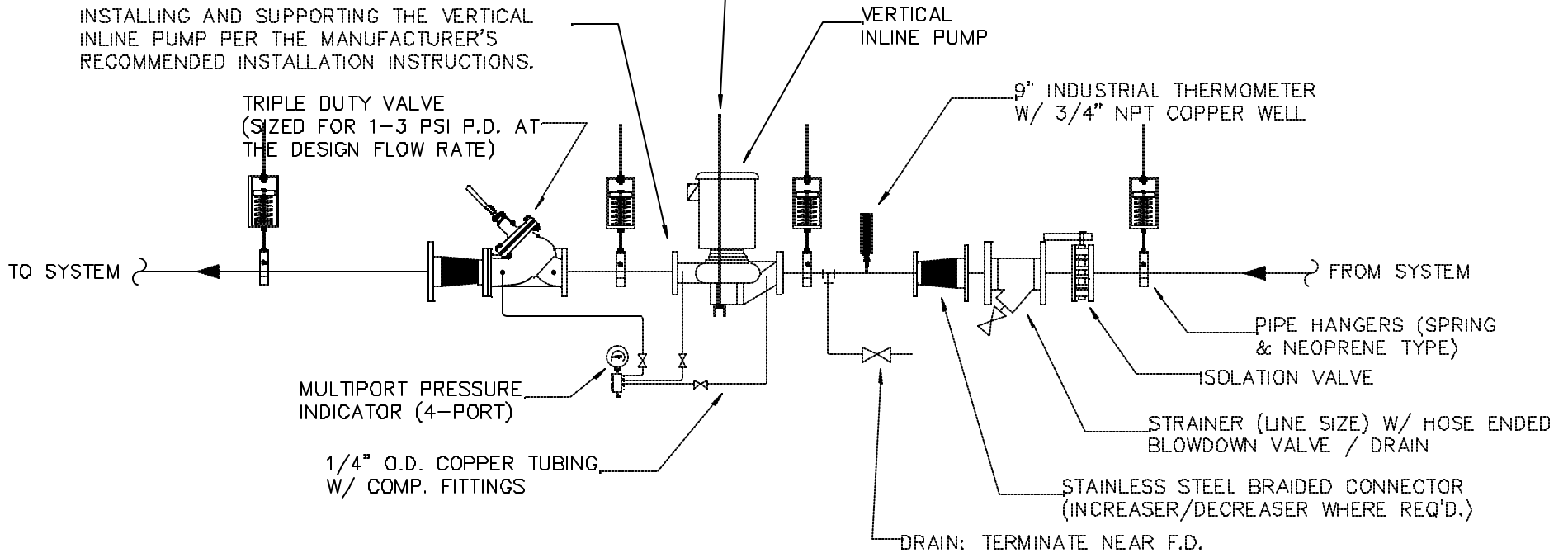


WHERE REQ'D. AN ADDITIONAL PUMP SUPPORT BRACKET MAY BE PROVIDED. PUMP SUPPORTS MUST BE INSTALLED IN SUCH A WAY AS TO NOT CREATE ANY STRESSES ON PUMP COMPONENTS. PUMP SUPPORTS SHALL NOT BE SO RIDIGDLY MOUNTED THAT IT LIMITS THE PUMPS ABILITY TO MOVE WITH PIPE EXPANSION MOVEMENT.

INSTALLER IS RESPONSIBLE FOR INSTALLING AND SUPPORTING THE VERTICAL INLINE PUMP PER THE MANUFACTURER'S RECOMMENDED INSTALLATION INSTRUCTIONS.



4 VERTICAL INLINE PUMP DETAIL - (PIPING MOUNTED)
 4 NOT TO SCALE